



Luxury Hideaway



Llenaire

Location and size

Country	Europa
Region	Mallorca
Living Space	800m ²
Plot Size	17,500m ²
Capacity	10

Quick Facts

Bedrooms	5
Bathrooms	6
Living Area	800 m ²
Rental Rate	from EUR 19,900,- / Week

Description

Villa Llenaire is nestled in the countryside, yet only 5 minutes by car from the traditional charm of Pollensa's old town and its winding cobbled streets, or the boutique restaurants and bars of Porto Pollensa. The long sandy beaches to the north are only a few minutes' drive away.

The villa is an architectural masterpiece that combines modern elegance with Mediterranean flair and blends majestically into the breathtaking hilly landscape.

5 bedrooms and 6 bathrooms provide ample space for 10 people. and rises majestically amidst the breathtaking mountain range of Pollença. You will enjoy a luxurious retreat that leaves little to be desired. Large windows let the sunlight flood through and offer spectacular views of the surrounding mountain landscape.

A highlight is the magnificent garden with lush vegetation, the large pool with and the many chill out zones, which invite you to let your soul dangle. Enjoy the sunset over the tops of the mountains with a cocktail or just let your mind wander and enjoy the wonderful nature

Specials

A chef is available 5 days a week to spoil you with all kinds of culinary delights. You choose whether you prefer lunch at lunchtime or dinner in the evening. The chef will contact you before your arrival to discuss your wishes for your stay.

The daily Continental Breakfast gives you a good start into the day and the housekeeping takes care of a daily cleaning (approx. 3 hours).

The villa management and the in-house concierge service will accompany you to make your holiday an unforgettable experience.

General Information

Panoramic mountain views of the Tramuntana mountain range in the north of the island
Large, covered outdoor terrace with a long dining table and comfortable armchairs for 10 people
Large heated saltwater pool, 12m long and 1.2m - 1.7m deep
5 bedrooms and 5 bathrooms
Fireplace in the living room
Fully equipped branded kitchen with a seating area for 6 people
Sonos Music System
Apple/ Smart TV in all bedrooms and living room
Large indoor playroom on the lower floor, fully equipped with everything our little guests could wish for
Indoor fitness equipment
Extensive gardens with exotic trees and fruit trees
Covered pool house with chill out sofas
Table tennis table, children's swing and sandpit
Separate BBQ house with built in charcoal grill

Living and Dining

spacious and open living and dining room area with direct access to the terrace and the garden
large open windows let plenty of light into the living area with a view of the green gardens and the pool
comfortable sofas and a long dining table with 10 dining chairs
open, fully equipped kitchen with branded appliances, extra wine fridge and seating area
spacious playroom for our little guests on the lower floor
extra TV room on the lower floor
Fitness equipment on the lower floor
Laundry room on the lower floor

Outdoors

large heatable saltwater pool (12m long and 1.2m - 1.7m deep)
Extensive gardens with exotic trees and fruit trees
Covered pool house with chill out sofas
Table tennis table, children's swing and sandpit
Separate grill house

Service

The villa offers a private chef and on request a concierge service

Daily cleaning

Continental breakfast 7 days a week.

5 days a week a private Chef. You decide if you prefer Lunch or Dinner.

Local top wines and cava soft drinks and water

in one evening Champagne tasting and canapés

in one evening Gin tasting and canapés

Bamford toiletries and beauty products in all bathrooms

Bathrobes and slippers for all guests

Images

Image 1



Image 2



Image 3



Image 4

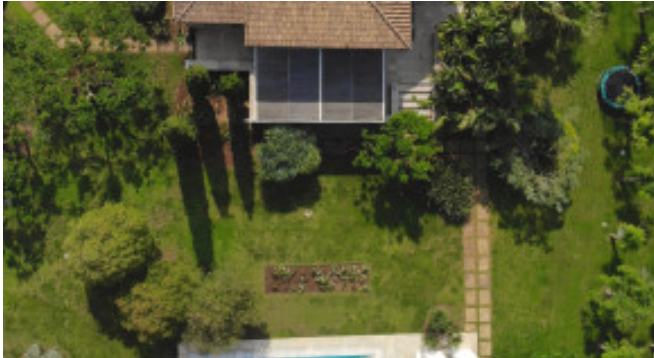


Image 5



Image 6



Image 7



Image 8



Image 9



Image 10



Image 11



Image 12



Image 13



Image 14



Image 15

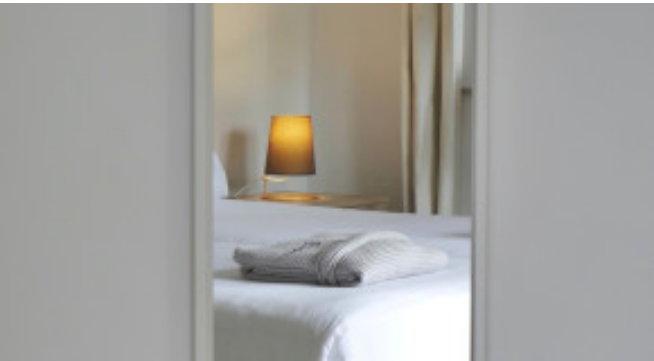


Image 16

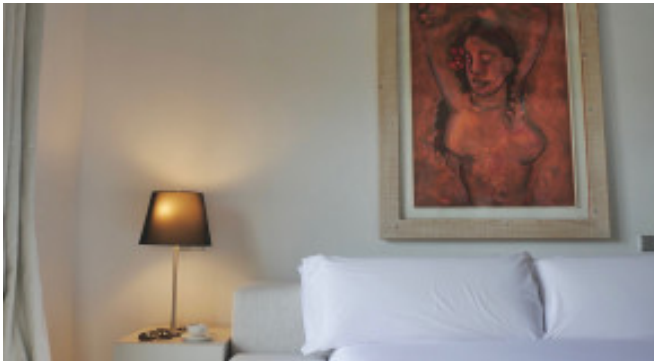


Image 17

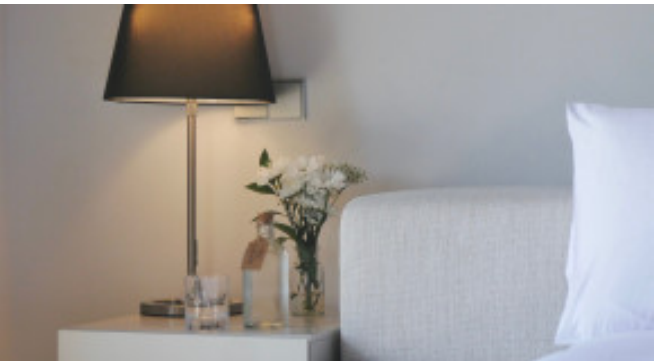


Image 18



Image 19



Image 20



Image 21



Image 22



Image 23

