



Luxury Hideaway



Villa Sol-LT

Location and size

Country	Spanien
Region	Mallorca
Living Space	325m ²
Plot Size	1,133m ²
Capacity	6
Orientation	4

Quick Facts

Bedrooms	3
Bathrooms	3
Living Area	325 m ²
Rental Rate	on request

Description

In the southwest of the island lies this classic Mallorcan villa with a fantastic view of the turquoise bay of Portals Vells. The Mediterranean villa offers space for 5-6 people. The clear and light-flooded rooms convey pure holiday feeling. Surrender to peace and relaxation by a glass of wine and let your gaze wander over the turquoise bay and the blue sea, which you can reach on foot in 5 minutes to go for a swim.

We leave it up to you whether you enjoy the air-conditioned interiors or the spacious pool area with BBQ,

3 bedrooms, each with en suite bathroom. In the master suite, a large bathroom with freestanding bathtub awaits you, offering unobstructed views of the sea and the wooded hills. 2 bedrooms are located on the upper floor, which is on the entrance level and 1 bedroom is located in the basement on the living level

Specials

The house was built on a slope and there is a glass lift at street level to bring people and luggage to the entrance. If you wish, you can of course also reach the house via the stairs.

The 5x10 m infinity pool offers a lot of swimming fun for young and old and you can enjoy the view of the bay and the open sea at the same time.

Barbecue lovers will be delighted with the large Weber gas barbecue.

General Information

Modern, Mediterranean house with views of the bay and the open sea
Spacious living and dining area
fully equipped Gaggenau kitchen
Highspeed Internet and Wifi
german Sat TV
roofed and open terraces with sea view
Infinity Pool 5m x 10m
under floor heating in all rooms
Central Aircondition
Bang und Olufson TV and Soundsystem
Weber gas BBQ
footpath through the pine forest to the beach (approx. 5 min)

Living and Dining

spacious and open living area
fully equipped Gaggenau kitchen
dining area with big dining table
roofed balcony/ terrace
access to roofed and open pool terrace

Outdoors

Panoramic view of the bay, the wooded hills and the open sea
roofed and open terraces on different levels
big dinner table on the pool terrace
Infinity Pool of approx 5 x 10 m and pool shower
Chill-out area
Weber gas BBQ
footpath through the pine forest to the beach (approx. 5 min)

Images

Image 1



Image 2



Image 3



Image 4



Image 5



Image 6

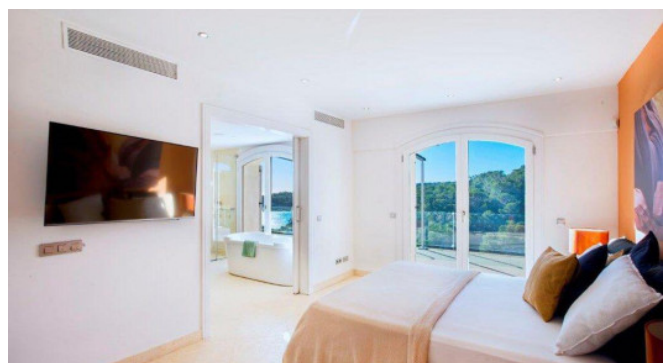


Image 7

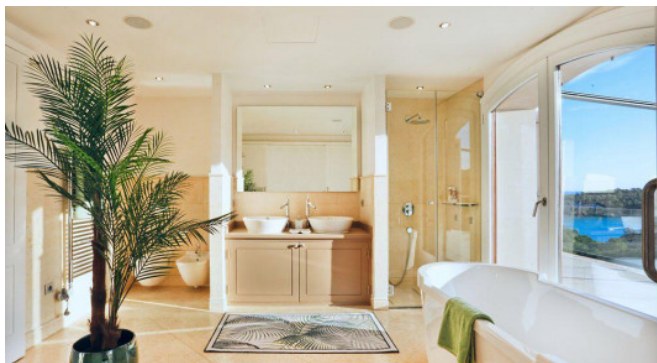


Image 8



Image 9



Image 10



Image 11



Image 12



Image 13



Image 14

