



Luxury Hideaway



Villa Alina

Location and size

Country	Spanien
Region	Ibiza
Living Space	600m ²
Plot Size	4,100m ²
Capacity	14

Quick Facts

Bedrooms	8
Bathrooms	8
Living Area	600 m ²
Rental Rate	from EUR 37,500,- / Week

Description

Villa Alina is situated in the highly sought-after and exclusive area of Porroig, nestled between Cala Jondal and Es Cubells. This stunning property boasts two magnificent swimming pools, beautifully landscaped gardens, sea views, and is ideally located directly opposite Playa Porroig beach. Villa Alina is so close to the beach that it has sea kayaks and paddleboards, making access to the beach easy and enjoyable.

Villa Alina is an expansive home spanning 600 m² on a 4100 m² plot. Recently renovated, the property emphasizes high-quality design, natural materials, and a serene aesthetic. The result is a home with superior interior design while maintaining a domestic charm.

The gardens create a sense of harmony throughout the property, offering private sunbathing spots and outdoor entertainment areas. There are three outdoor dining areas, each seating 10-14 guests, furnished terraces with sea views, and two swimming pools. The garden design incorporates Corten steel, highlighting the grand entrance and landscaping. Abundant in green spaces and mature plantings, the property transforms into a magical space at night with carefully coordinated lighting.

A separate outdoor area is dedicated to games such as table tennis and table football, alongside a cozy seating area. Villa Alina features two entrances and internal parking for at least four cars. Additionally, it includes a gym equipped with the latest Technogym gear and spinning bikes, as well as water toys such as stand-up paddleboards and kayaks.

The luxurious master suite spans 80 m² and includes an ensuite shower, separate sauna, and a 40 m² shaded private terrace with massage beds and loungers. The spatial design ensures that all bedrooms offer a luxurious retreat from communal spaces and access to the lush gardens and sophisticated pool terraces. Each bedroom has an ensuite bathroom with a focus on earthy color palettes with Italian tiles, many featuring deep Brazilian marble for ultimate sophistication.

The ground floor also comprises two living areas, a bar, guest bathroom, TV area, dining room, kitchen, and service area. The living room opens to the pool and garden at the front and to an outdoor dining area and patio at the back.

Villa Alina is a showcase property with high-quality materials throughout, complemented by the care and attention to a Balearic lifestyle, fully achieved by lush gardens and outdoor entertainment options.

Tourist License: ETV-1257-E and ET-0851-E

Specials

The stylish villa offers numerous special features to make your stay especially pleasant:

Air conditioning in all rooms

2nd building

Baby equipment

Bar

BBQ

CCTV

Fitness studio

Integrated sound system

Outdoor sound system

Office

On-site staff

2 pools

Sauna/Hammam

Smart home features

Table tennis

Smart TV

Underfloor heating

WiFi

Sea view

Living and Dining

Two living areas on the ground floor

A dining room

A bar

A guest bathroom

A TV area

A kitchen

A service area

The living area opens onto the pool and garden at the front and to an outdoor dining area and terrace at the back.

Service

Concierge services such as private chef, yacht charter, VIP transfers available upon request.

Images

Image 1



Image 2



Image 3



Image 4



Image 5



Image 6



Image 7



Image 8



Image 9



Image 10



Image 11



Image 12



Image 13



Image 14



Image 15



Image 16



Image 17



Image 18



Image 19



Image 20



Image 21



Image 22



Image 23



Image 24



Image 25



Image 26



Image 27



Image 28



Image 29



Image 30



Image 31



Image 32



Image 33



Image 34



Image 35



Image 36



Image 37



Image 38



Image 39



Image 40



Image 41



Image 42



Image 43



Image 44



Image 45



Image 46



Image 47



Image 48

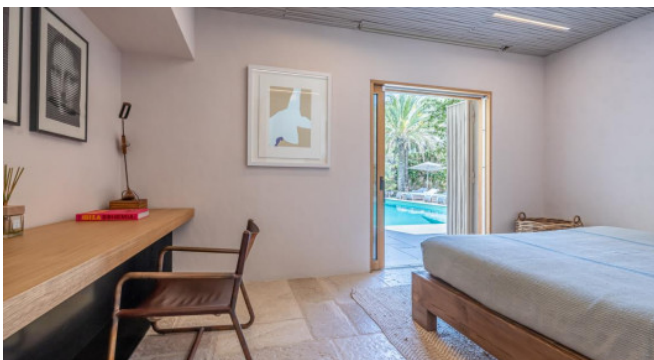


Image 49



Image 50



Image 51



Image 52



Image 53



Image 54



Image 55



Image 56



Image 57



Image 58



Image 59



Image 60



Image 61



Image 62



Image 63



Image 64



Image 65



Image 66



Image 67



Image 68



Image 69



Image 70



Image 71



Image 72



Image 73



Image 74



Image 75



Image 76



Image 77



Image 78



Image 79



Image 80



Image 81



Image 82



Image 83



Image 84



Image 85



Image 86



Image 87



Image 88



Image 89

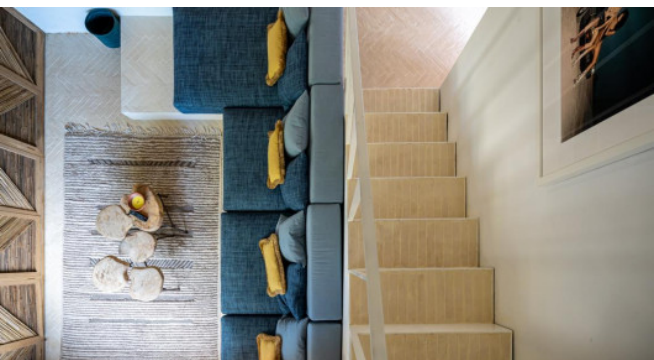


Image 90



Image 91



Image 92



Image 93



Image 94

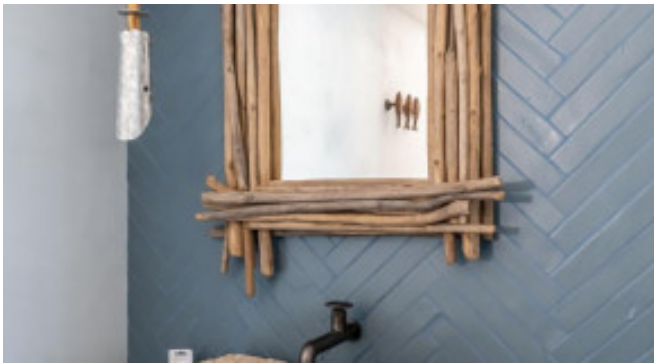


Image 95



Image 96



Image 97



Image 98



Image 99



Image 100



Image 101



Image 102



Image 103



Image 104



Image 105



Image 106



Image 107



Image 108



Image 109



Image 110



Image 111



Image 112



Image 113



Image 114



Image 115



Image 116

