



## Luxury Hideaway



### Villa Sa Bateria

#### Location and size

Country	Europa
Region	Mallorca
Living Space	700m <sup>2</sup>
Plot Size	4,200m <sup>2</sup>
Capacity	8

#### Quick Facts

Bedrooms	4
Bathrooms	5
Living Area	700 m <sup>2</sup>
Rental Rate	from EUR 9,387,- / Week

## Description

The villa with stunning views over the bay and the nature harbor of Porto Colom, is situated in a quiet residential area. The spacious villa has been built on a large plot of land and offers sea access. The bright and ample living room is situated at the same level as the entrance door. Here are also the kitchen, a small bedroom and the main bedroom with shower and a double bath en suite. The floor downstairs you can reach over the staircase from the hall. For clients with a handicap it would be possible to use the elevator (on petition). There are 2 bedrooms at the ground floor, both of them with bathroom en suite and access to the terrace and the garden. Further is here the TV room, the laundry, a small kitchen and another highlight?. a 12,5 x 2,5 m inside pool. Here are also a few sports equipment?s, a shower and a whirlpool. At this level is as well the garden situated with his outside pool, from where you have an amazing view on the boats and yachts that are entering and leaving the bay.

## Specials

Porto Colom counts with its harbor, the promenade, bars and restaurant plus the golf course ?Vall d'Or Golf? nearby as one of the most perfect villages in the southeast cost of the island. Several well-known villages like Porto Petro or Cala d'Or with their lovely beaches and small bays are situated nearby as well.

ETV 12337

## General Information

TV

Wifi

Central heating

A/C in all bedrooms

Indoorpool

Seaview

Covered and uncovered terrace

In- and outdoor dining area

BBQ

Pool (10 m x 5 m)

Jacuzzi

Sunbeds

Shower outside

Chill-out area

Direct access to the sea

Utility room

## Living and Dining

TV

Wifi

Dining area

Central heating

A/C in all bedrooms

Indoorpool

## Outdoors

Seaview

Covered and uncovered terrace

Dining area

BBQ

Pool (10 m x 5 m)

Jacuzzi

Sunbeds

Shower

Chill-out area

Direct access to the sea

## Service

Extra cleaning on request and with surcharge!

# Images

Image 1



Image 2



Image 3



Image 4



Image 5



Image 6



Image 7



Image 8



Image 9



Image 10



Image 11



Image 12



Image 13



Image 14



Image 15



Image 16



Image 17



Image 18



Image 19



Image 20



Image 21



Image 22



Image 23

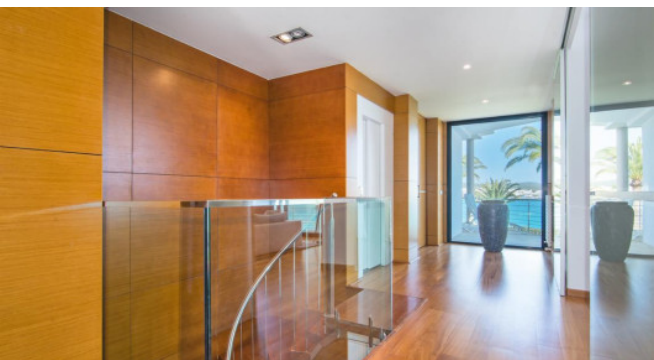


Image 24

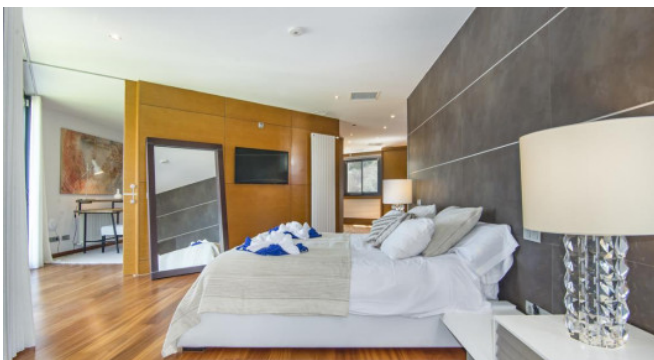


Image 25



Image 26



Image 27



Image 28



Image 29



Image 30

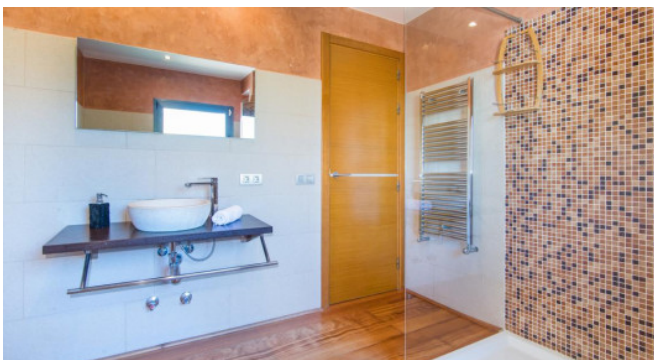




Image 31



Image 32



Image 33

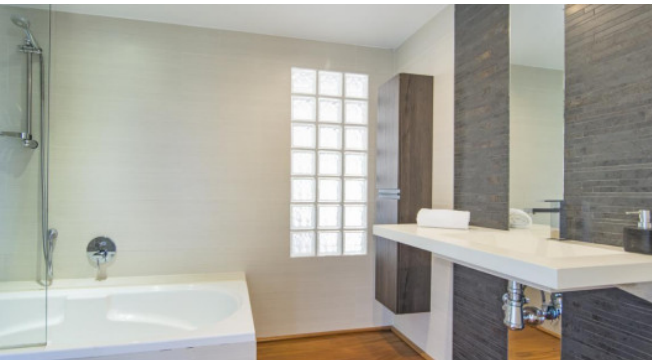


Image 34



Image 35

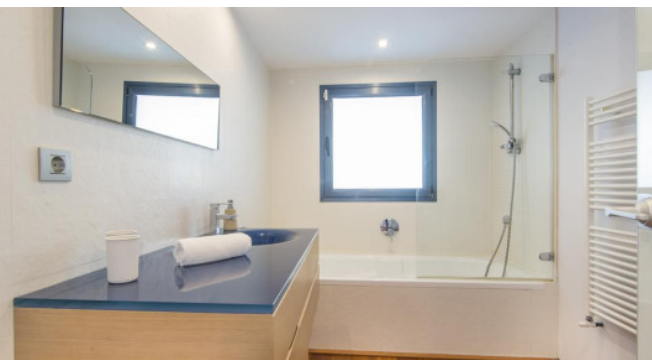


Image 36



Image 37



Image 38

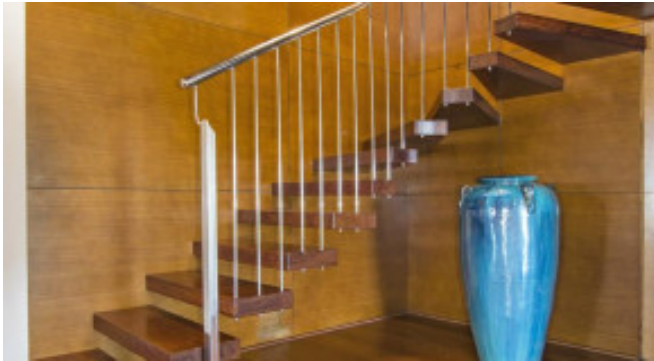


Image 39



Image 40



Image 41



Image 42



Image 43



Image 44



Image 45



Image 46



Image 47



Image 48



Image 49



Image 50



Image 51



Image 52



Image 53



Image 54



Image 55



Image 56



Image 57



Image 58

