



Luxury Hideaway



Villa Strathmore House

Location and size

Country	Südafrika
Region	Cape Town
Capacity	12

Quick Facts

Bedrooms	6
Bathrooms	5
Rental Rate	from EUR 5,005,- / Week

Description

This impressive large multi-level villa with 6 bedrooms offers the discerning guest, panoramic sea views, a good location as well as luxury and privacy. The villa consists of a main house and an apartment, which are accessed by a large staircase from the street entrance. The two bedroom apartment has a cozy living area, a fully equipped kitchenette and a shared bathroom.

The spacious main villa is divided into two levels. On the lower level are the remaining four bedrooms, three of which face the sea and all open onto a shared wooden terrace with Jacuzzi. The fourth bedroom opens out onto a courtyard.

The heart of the villa is on the upper level, where you'll find a spacious open-plan living area with French doors leading out onto the sheltered rear terrace and large, sparkling pool. The dining area flows naturally into the covered front terrace, where you'll find a barbecue and comfortable garden furniture for extensive sunny days, sundowner sessions, and wonderful views of the sea and mountains.

Specials

This is a year-round vacation home that is exclusively and professionally managed. The office of the manager is located in Camps Bay. This property has been carefully vetted prior to commissioning and has a dedicated team to take care of guests around the clock, as well as housekeeping, WiFi and hotel quality amenities. The manager prides himself on providing the highest level of service to ensure you have a memorable stay!

General Information

Open living, dining and kitchen area with access to the rear and front terraces

Sound system in the living room

TV

10 seater dining table

Sea view from the living area

Air conditioning

Wood fireplace

WIFI

Pool

View of the mountains and the sea

Gas BBQ

Weber grill

1 garage with remote access - no direct access to the house

Living and Dining

Fully equipped kitchen

Washing machine & tumble dryer

Open plan living, dining and kitchen area with access to rear and front terraces

Sound system in living room

TV

10 seater dining table

Sea view from living area

Guest toilet on the upper level

Air conditioning

Wood fireplace

Master Bedroom

Middle level

Double bed

En-suite bathroom with bathtub and shower

Leads to the front terrace

Partial sea view

Air conditioning

Second Bedroom

Middle level

Double bed

En-suite bathroom with shower

Leads to the front terrace

Sea view

Air conditioning

Third Bedroom

Middle level

2x single beds, can be converted into a double bed on request

En-suite bathroom with shower

Leads to the front terrace

View of the sea

Air conditioning

Fourth Bedroom

Middle level

Queen bed

En-suite bathroom with shower

Air conditioning

Fifth Bedroom

Flatlet on the lower floor - contains the fifth and sixth bedroom.

Queen bed

Shared bathroom with shower in the bathtub

Wall heating

Sixth Bedroom

Flatlet on the lower floor - contains the fifth and sixth bedroom.

2x single beds, can be converted into a double bed on request

Shared bathroom with shower in the bathtub

Wall heating

Outdoors

Front terrace

Gas BBQ

Weber grill

8 seater dining table

Swimming pool on the back terrace

5 deck chairs

Service

24 hours monitored alarm

Cleaning Monday - Friday, except holidays, but can be arranged for an extra charge

Garden and pool service

1 garage with remote access, no direct access to the house

Images

Image 1



Image 2



Image 3

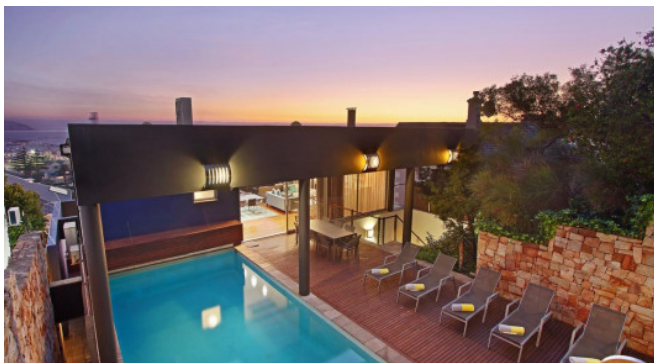


Image 4

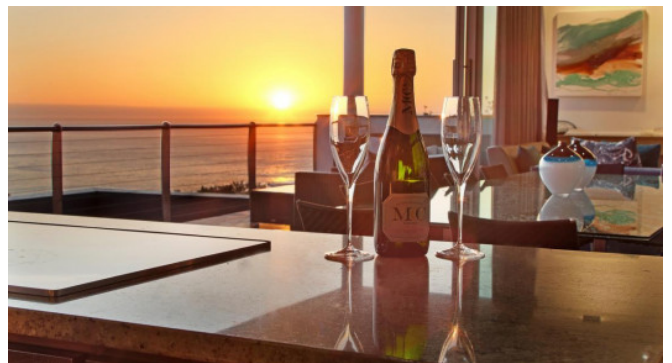


Image 5



Image 6

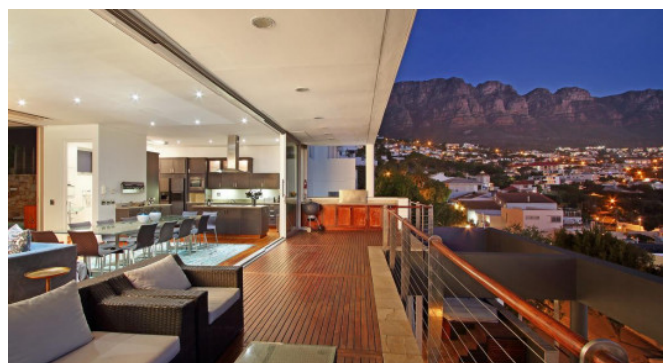


Image 7



Image 8



Image 9



Image 10



Image 11



Image 12



Image 13



Image 14



Image 15

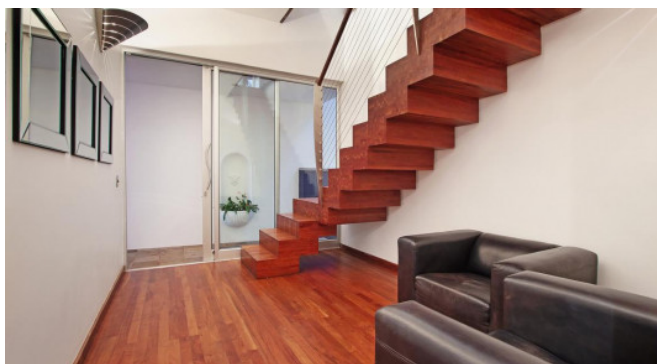


Image 16

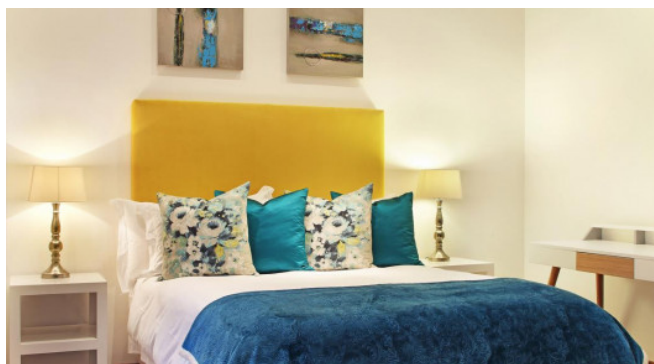


Image 17

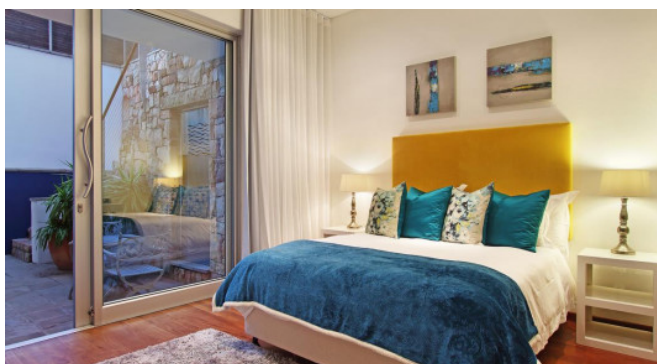


Image 18



Image 19



Image 20

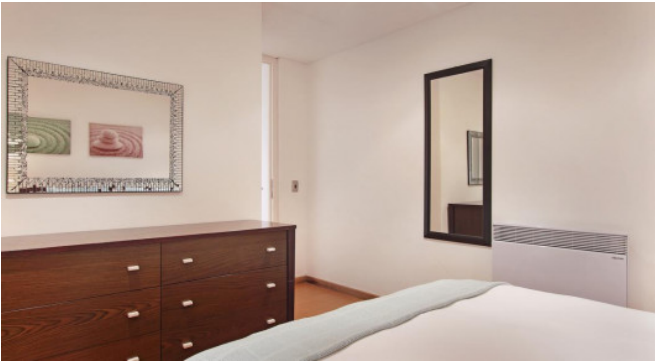


Image 21



Image 22



Image 23



Image 24



Image 25



Image 26

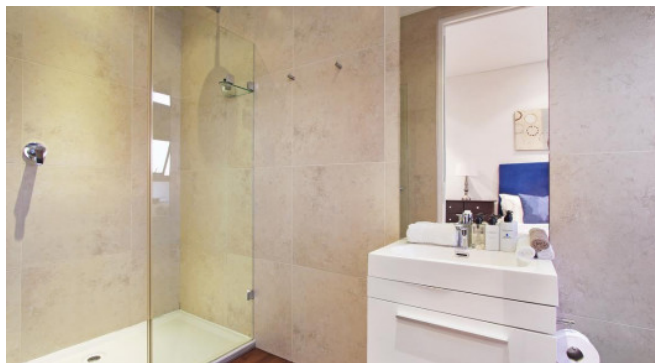


Image 27



Image 28



Image 29



Image 30



Image 31



Image 32



Image 33



Image 34



Image 35



Image 36

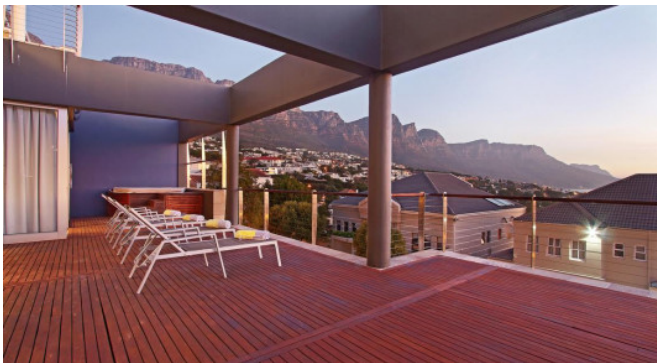


Image 37



Image 38



Image 39

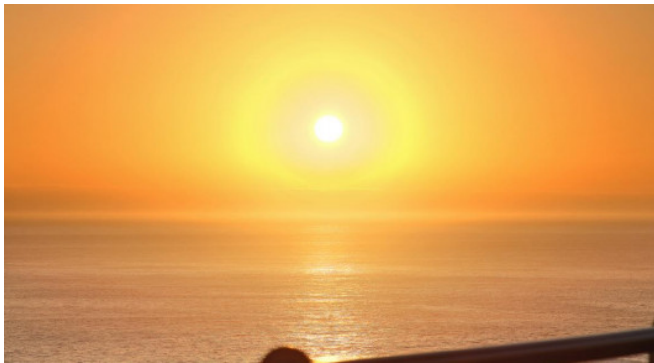


Image 40

